

The river is regularly patrolled by the Conway Police Department!

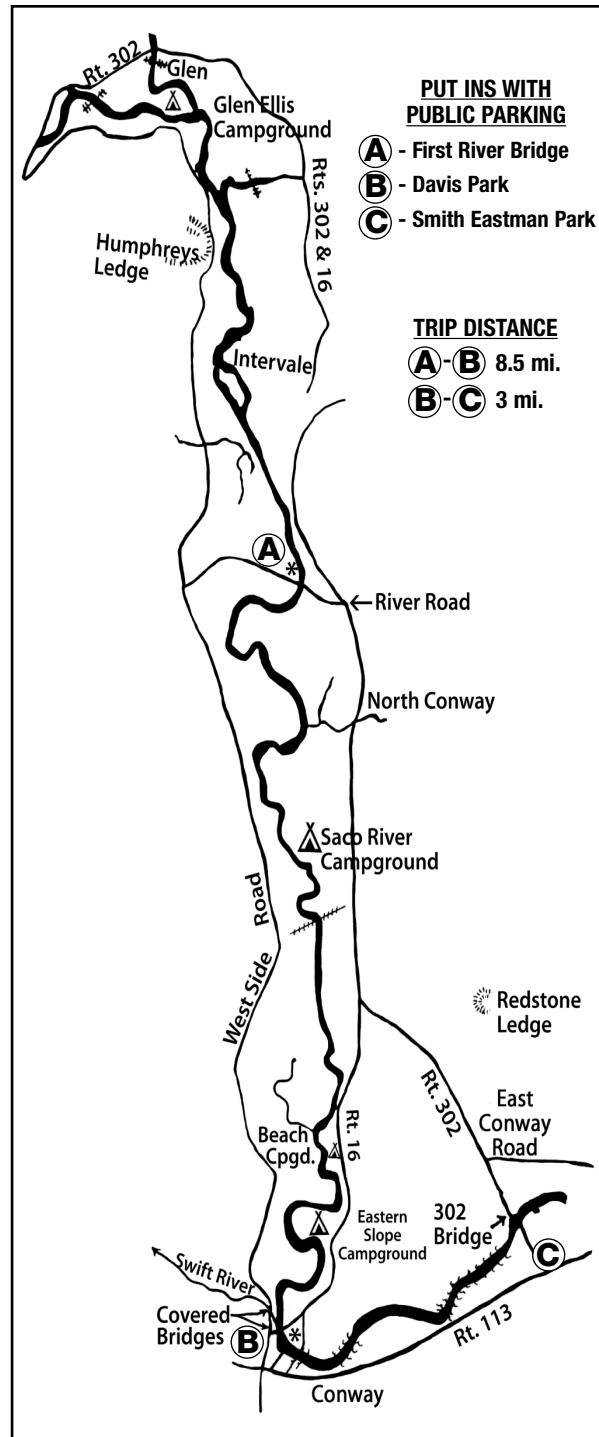
Alcohol laws are strictly enforced. Have your ID if you are consuming alcohol.

Have a great time on the river. Be safe and respect others.

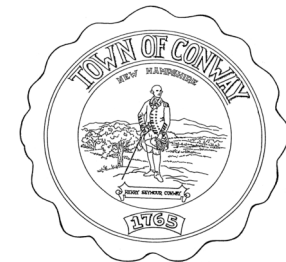
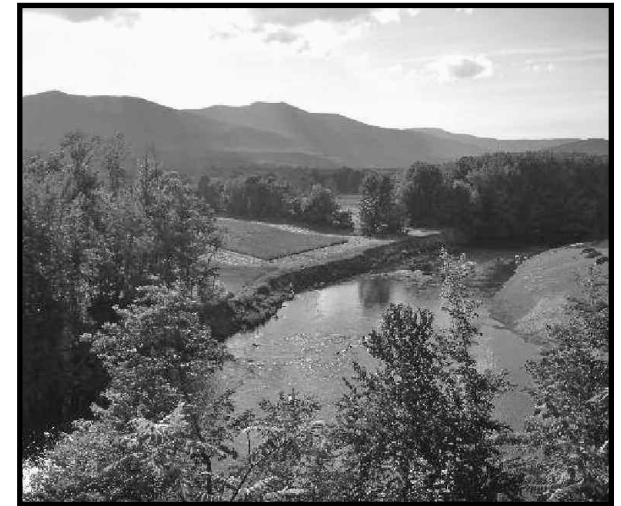
Additional information available at www.conwayrec.com

Thanks to the Gibson Woodbury Foundation for their financial support

Some of the information in this brochure was kindly provided by the Saco River Recreational Council, Fryeburg, Me.



Saco River User's Guide: Conway Section



Town of Conway
1634 E. Main Street
Center Conway, NH 03818
603-447-3822
www.conwaynh.org

BE SAFE

- Check river and weather conditions. The river is not always shallow & gentle.
- Secure your vehicle & remove valuables.
- Have a plan; make sure everyone knows the plan. Identify start and end points. *Pay attention to mile markers (NH -1, etc.) in case you need to call for help.*
- Life vests are required by law and must be worn by children 10 and under.
- View wildlife from a safe distance, never feed animals.

KEEP THE RIVER CLEAN

- There is no trash collection so carry out all trash & gear.

- Outhouses are found only at First River Bridge and Davis Park. Human and pet waste must be carried out or buried at least 6", 200 ft. in the woods, not on the beaches.
- Treat the river bank with care, do not pick or trample plants.

RESPECT PRIVATE LAND

- There are only three public accesses along this stretch of the river: First Bridge, Davis Park and Smith-Eastman Park. All other land is private.
- Do not trespass on land marked private property.
- Camping allowed only with landowner consent.
- Campfires are prohibited without landowner consent and fire department permit.

RESPECT OTHER USERS

- Fishermen, birdwatchers and photographers also use the river, keep your distance and minimize noise.

OTHER THINGS YOU NEED TO KNOW

- NO fireworks allowed on the river (strictly enforced).
- Alcohol consumption is not permitted at public accesses.
- No motors are permitted.
- No glass allowed on the river.
- **Avoid strainers (fallen trees).** Water flows through downed trees and can pin you and your boat against the tree. Boats tied together and inflatables do not steer well and are more likely to become caught in strainers.